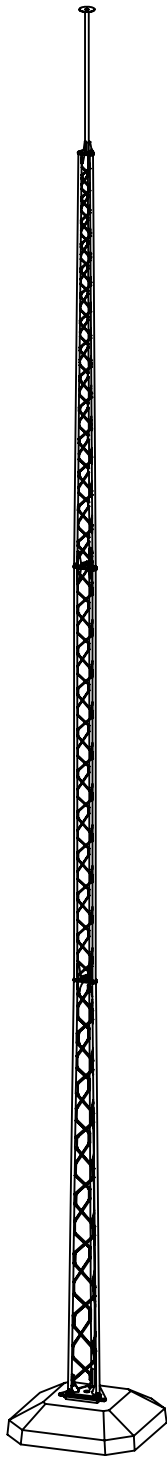


lightning rod mast with:

- Antenna
 - Security Camera
 - Flood light etc.
- 18/19/20/21m BBC



B 73 kg

6000

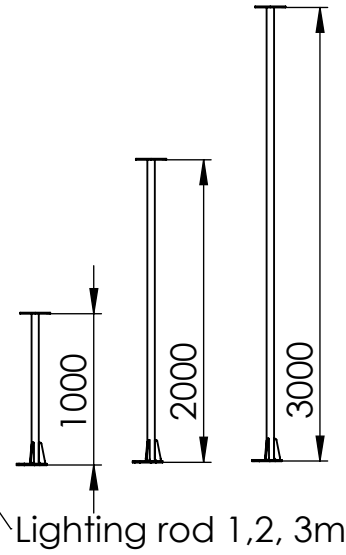
B Suora
75 kg

6000

C 89 kg

6000

hinge



Raw material at least
S355/S420

All parts hot dip galvanized
SFS 1461 class B

Surface intalled concrete stand
2400 kg 1800x1800mm

| | | | | | | | | | |
|---------|--------|-----|-------------|----------|---------------------------------|---|--|---------|----|
| Revisio | | | Toleranssit | | | Mittakaava | | Massa | |
| | | | | | | Materiaali | | | |
| | | | Pvm | Nimi | D:\CAD\Työt\Mastof\Ukkosmastof\ | | | | |
| | | | Piirt | 3.2.2016 | | | | | IS |
| | | | Tark | | | | | | |
| | | | Hyv | | | | | | |
| | | | BBC | | |  | | Revisio | |
| Merk | Muutos | PVM | Piirt | | | | | | |